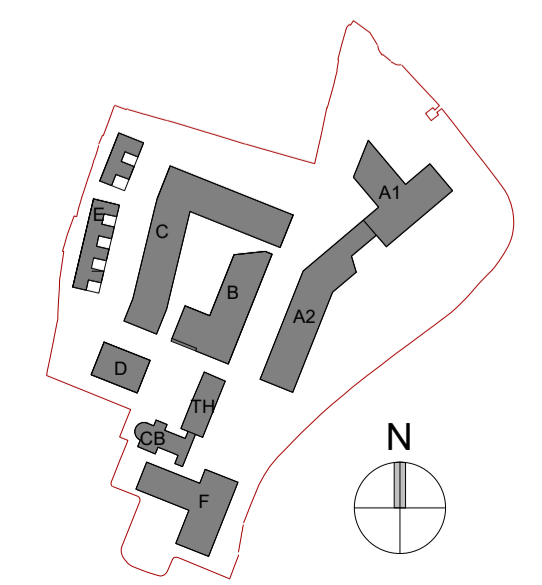


Bin, Bike, Stores & ESB

No	Material Description
1	Brick (Buff) Type 1
2	Brick (Grey) Type 2
3	Brick (Red) Type 3
4	Precast Concrete
5	Metal Cladding (Warm grey)
6	Metal Railing
8	Selected Window
9	Selected Door
10	Metal Flashing

No	Material Description
11	Light Metal Frame Structure
12	Curtain wall System
13	Spandrel Panel
14	Selected Metal Door (Warm Grey)
15	External Steel Doors
16	Swift Brick
17	Render (White) Type 1
18	Selected Timber Cladding



Revision Description	Date	Rev. No.	Issued by
Planning Application Submission	05.12.2025	A3-C01	RA

Any reference to fire safety design or performance is presented for coordination purposes only. Refer only to the granted Fire Safety Certificate, and fire consultant's information for fire safety design, specification and performance.

Figured dimensions only to be used. This drawing is copyright of O'Mahony Pike Architects Ltd. All information is shared as per approved use in accordance with ISO19650-2:2018, Table 5; Standard Codes for Suitability of Models and Documents and the BEP. If the 'Status' field is empty, this information has been shared at SO - WIP.

omahony pike

Project Code: 19037C Scale @ A0: 1:100
 Project Lead: DM Date: 05.12.2025
 Drawn By: SR Revision: A3-C01
 Job No.: 19037C Status: A3
 Purpose: Planning

architecture | urban design **Dublin** **Cork**
 email: info@omahonypike.com The Chapel One South Mall
 tel: +353 1 202 7400 Mount St. Anne's Cork City
 fax: +353 1 283 0822 Milltown, Dublin 6 Co. Cork
 www.omahonypike.com D06 XN52 Ireland T12 CCN3 Ireland

Project: Sandford Road
 Location: Milltown Park, Sandford Road, Dublin 6
 Client: Sandford Living Ltd.

Drawing Title: Bin, Bike, Stores & ESB
 Drawing No.: 19037C-OMP-ZZ-ZZ-DR-A-9100

Source File: 19037C-OMP-ZZ-ZZ-M3-A-0002.rvt

