

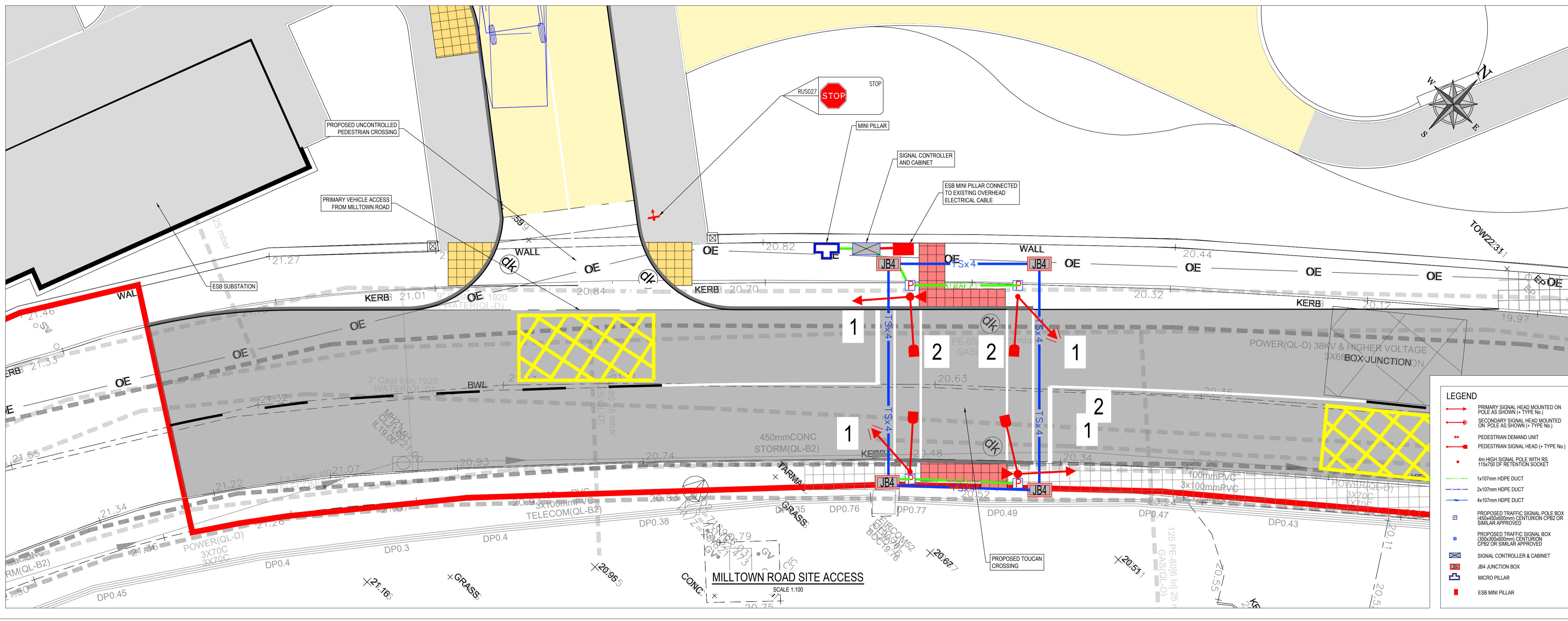
ON ORIGINAL

© COPYRIGHT OF THIS DRAWING IS RESERVED BY DBFL CONSULTING ENGINEERS. NO PART SHALL BE REPRODUCED OR TRANSMITTED WITHOUT THEIR WRITTEN PERMISSION.

NO CHANGES OF WHATSOEVER NATURE ARE TO BE MADE TO ANY DETAILS SET OUT OR CONTAINED IN ANY DBFL SPECIFICATIONS OR DRAWINGS UNLESS THE EXPRESS CONSENT HAS BEEN OBTAINED IN ADVANCE, IN WRITING, FROM DBFL.

GENERAL NOTES:

- ALL WORKS TO BE CONSTRUCTED IN ACCORDANCE WITH THE NRA SPECIFICATION FOR ROAD WORKS UNLESS OVERRIDDEN BY LOCAL OVERSEASING AUTHORITY'S STANDARDS
- ALL ROAD MARKINGS & SIGNS SHALL COMPLY FULLY WITH THE TRAFFIC SIGNS MANUAL PUBLISHED BY THE DEPARTMENT OF TRANSPORT NOVEMBER 2015.
- SIGNS & MARKINGS CONTRACTOR TO CONFIRM PRECISE SETTING OUT WITH EMPLOYERS REPRESENTATIVE PRIOR TO COMPLETION.
- ALL SIGNS TO BE MOUNTED ON 75mm GALVANISED STEEL POSTS WITH COLOURED SLEEVES IN O.C. TO SPECIFICATION AND IN ACCORDANCE WITH THE TRAFFIC SIGNS MANUAL. MOUNTING HEIGHT TO BOTTOM OF SIGN = 2.3m U.N.O.
- ALL TRAFFIC MANAGEMENT TO COMPLY FULLY WITH THE PROVISIONS OF CHAPTER 8 OF THE TRAFFIC SIGNS MANUAL.
- ALL CO-ORDINATES ARE TO IRISH TRANSVERSE MERCATOR. ALL LEVELS ARE TO ORDNANCE DATUM AND ARE IN METRES.
- ALL STREET FURNITURE TO BE TAKEN UP AND SET ASIDE FOR RE-USE. PROPOSED STREET FURNITURE TO BE RETROFITTED BY OTHERS.
- ALL EXISTING SIGNS (INCLUDING POLES) AND MARKINGS TO BE TAKEN UP OR COVERED AND TEMPORARY MEASURES APPLIED IN ACCORDANCE WITH CONTRACTORS TRAFFIC MANAGEMENT PLAN. THE CONTRACTOR MAY USE EXISTING SIGNAGE AS PART OF THEIR TRAFFIC MANAGEMENT PLAN.
- ALL EXISTING CHANGERS AND ACCESS POINTS TO REMAIN CLEAR OF OBSTRUCTION THROUGHOUT WORKS. CHANGERS SHALL BE REBUILT/RETAINED IN POSITION IDENTIFIED ON FINISHING WORKS DRAWINGS.
- ALL PEDESTRIAN, CYCLE AND VEHICULAR ROUTES MUST BE RETAINED IN ACCORDANCE WITH APPROVED TRAFFIC MANAGEMENT PLAN.
- ALL MATERIALS TO BE DISPOSED OFF SITE SHALL BE TAKEN TO A LICENSED FACILITY APPROVED BY THE LOCAL OVERSEASING AUTHORITY.
- THE CONTRACTOR MUST LAISE DIRECTLY WITH LOCAL AUTHORITY DEPARTMENTS AS DIRECTED IN THE WORKS REQUIREMENTS.
- ALL VEHICULAR & PEDESTRIAN, CYCLE & PRIVATE ACCESS ROUTES WITHIN AND SURROUNDING THE WORKS EXTENTS MUST BE MAINTAINED THROUGHOUT THE WORKS IN ACCORDANCE WITH THE CONTRACTORS APPROVED TEMPORARY TRAFFIC & OPERATIONS MANAGEMENT PLAN.



KEY PLAN

ORDNANCE SURVEY IRELAND LICENCE  
No EN 0017921  
© ORDNANCE SURVEY IRELAND GOVERNMENT OF IRELAND

rev	date	description	by	chkd.
2	19-12-25	LRD APPLICATION	JMG	SMM
1	26-06-25	LRD APPLICATION	PGC	EJD
0	20-12-21	LRD APPLICATION	OWF	BK

STATUS CODES

purpose acceptance  
P3 - PLANNING PERMISSION S - ISSUED

**DBFL**  
CONSULTING ENGINEERS

T: +353 1 400 4000 | E: info@dbfl.ie | W: www.dbfl.ie

DUBLIN | CORK | GALWAY | WATERFORD

project ref.  
SANDFORD ROAD, MILLTOWN

drawing title  
TRAFFIC SIGNALS & DUCTING LAYOUT

client  
SANDFORD LIVING LIMITED

designed by BK author GJS scale 1:100 sheet size A1  
drawing no. 190226-X-04-200-DTM-DR-DBFL-CE-1210 revision 2