

## APPENDIX B - PART V PROVISION

# PART V SITE PLAN



PART V UNITS OUTLINED IN BLUE

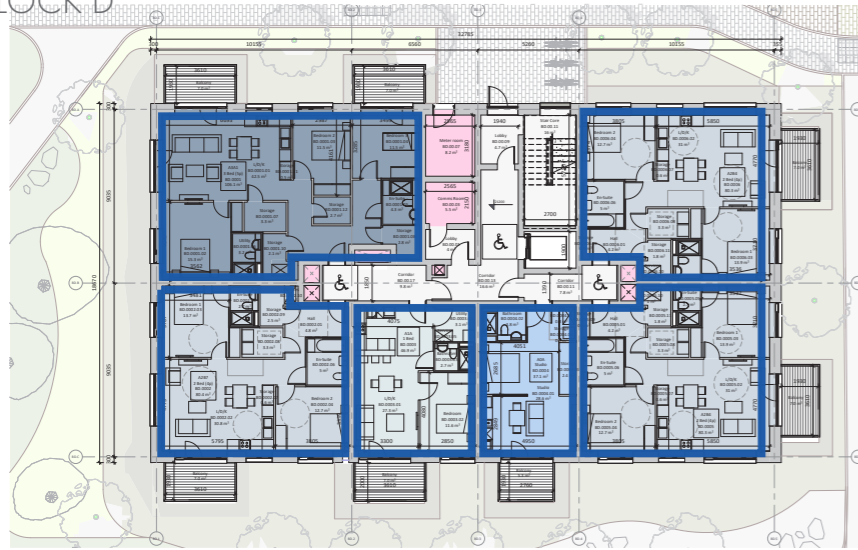


PART V UNITS @ GF LEVEL ONLY



# PART V PROVISION

BLOCK D



In Response to DCC Housing Department requirements, we propose the provision of 56 units within the development.

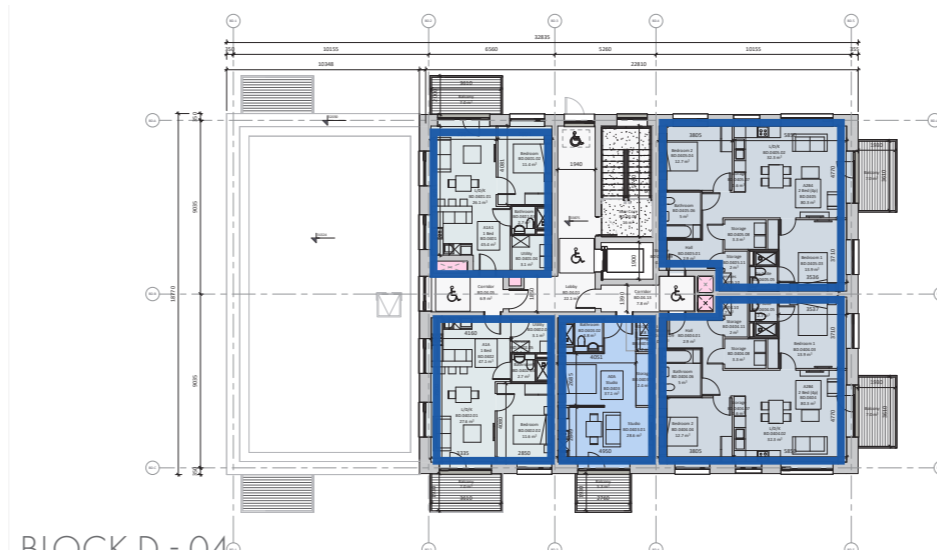
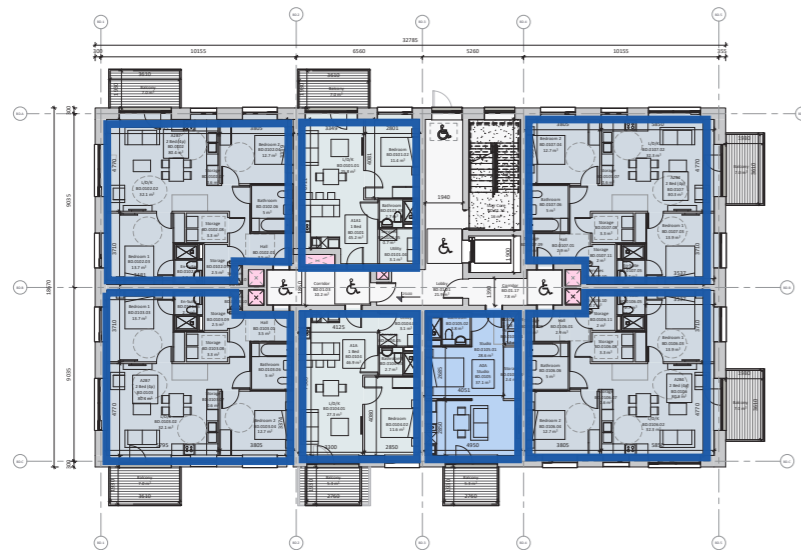
30 units take up the entirety of Block D.

The proposed mix in Block D consists of 5 No. studios, 9 No. 1 beds, 15 No. 2 beds and 1 No. 3 beds.

PART V UNITS OUTLINED IN BLUE

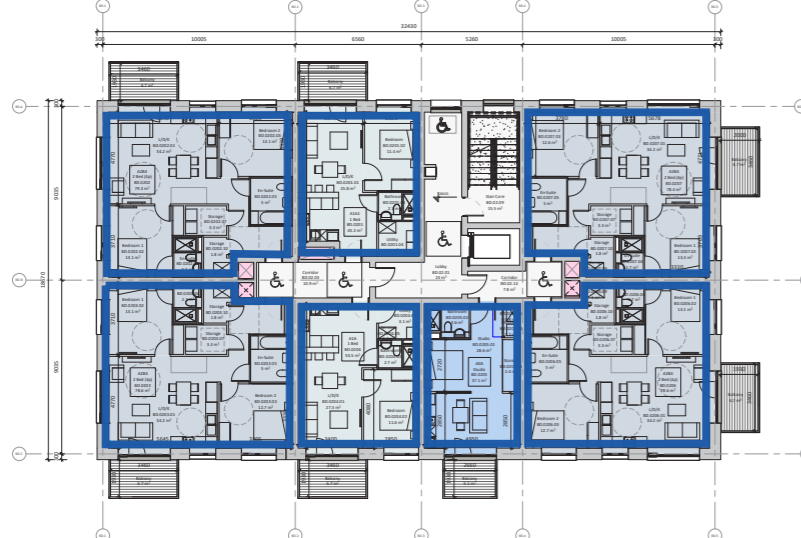
BLOCK D - 00

BLOCK D - 03



BLOCK D - 01

BLOCK D - 04



BLOCK D - 02

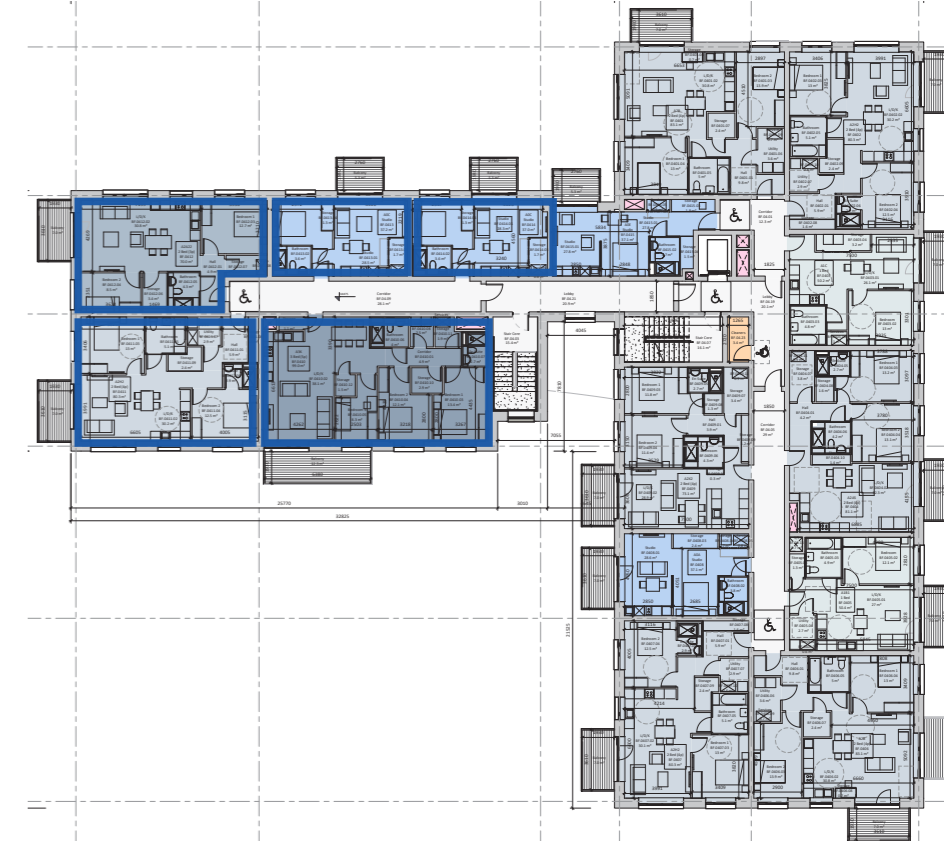
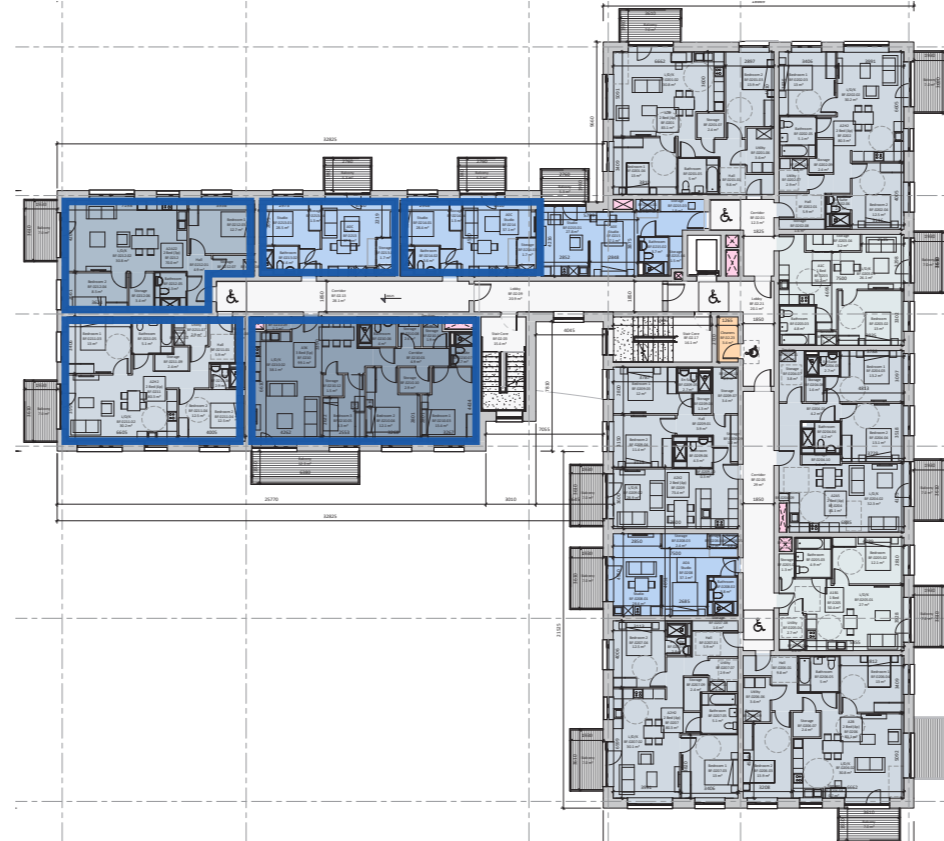
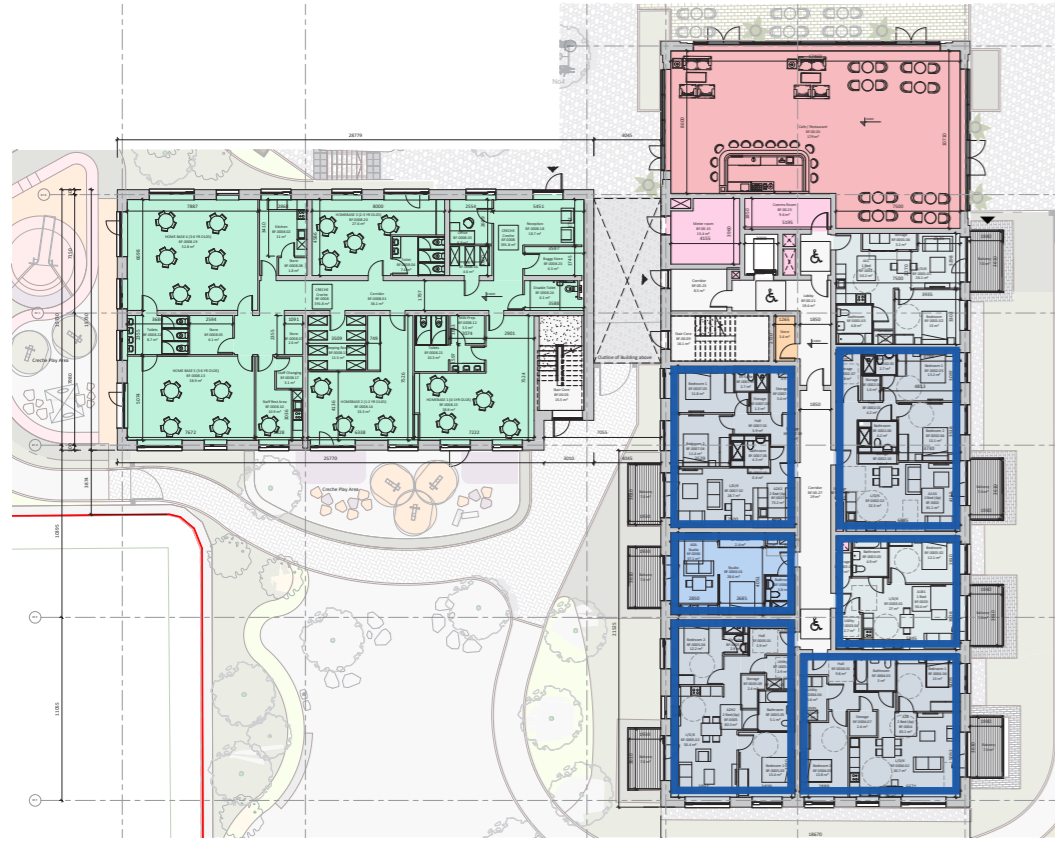
# PART V PROVISION

## SCHEDULE OF ACCOMMODATION - BLOCK D

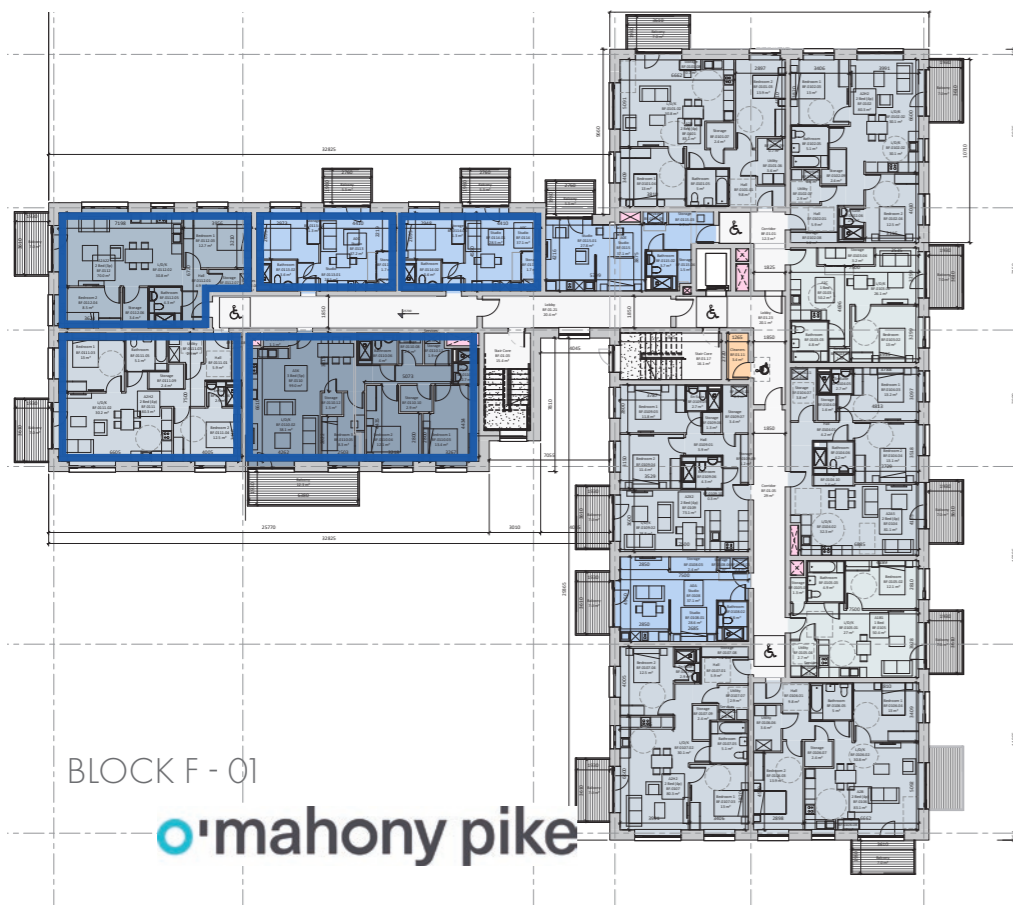
| Building | Staircore No. | Unit No. | Floor Level | Unit Description | Unit area (m2) |
|----------|---------------|----------|-------------|------------------|----------------|
| D        | Core 1        | 1        | 0           | 3 Bed Apartment  | 105.5          |
| D        | Core 1        | 2        | 0           | 2 Bed Apartment  | 80.4           |
| D        | Core 1        | 3        | 0           | 1 Bed Apartment  | 46.9           |
| D        | Core 1        | 4        | 0           | Studio Apartment | 37.1           |
| D        | Core 1        | 5        | 0           | 2 Bed Apartment  | 80.3           |
| D        | Core 1        | 6        | 0           | 2 Bed Apartment  | 80.3           |
| D        | Core 1        | 7        | 1           | 1 Bed Apartment  | 45.2           |
| D        | Core 1        | 8        | 1           | 2 Bed Apartment  | 80.4           |
| D        | Core 1        | 9        | 1           | 2 Bed Apartment  | 80.4           |
| D        | Core 1        | 10       | 1           | 1 Bed Apartment  | 46.9           |
| D        | Core 1        | 11       | 1           | Studio Apartment | 37.1           |
| D        | Core 1        | 12       | 1           | 2 Bed Apartment  | 80.3           |
| D        | Core 1        | 13       | 1           | 2 Bed Apartment  | 80.3           |
| D        | Core 1        | 14       | 2           | 1 Bed Apartment  | 45.2           |
| D        | Core 1        | 15       | 2           | 2 Bed Apartment  | 80.4           |
| D        | Core 1        | 16       | 2           | 2 Bed Apartment  | 80.4           |
| D        | Core 1        | 17       | 2           | 1 Bed Apartment  | 46.9           |
| D        | Core 1        | 18       | 2           | Studio Apartment | 37.1           |
| D        | Core 1        | 19       | 2           | 2 Bed Apartment  | 80.3           |
| D        | Core 1        | 20       | 2           | 2 Bed Apartment  | 80.3           |
| D        | Core 1        | 21       | 3           | 1 Bed Apartment  | 45.4           |
| D        | Core 1        | 22       | 3           | 1 Bed Apartment  | 47.1           |
| D        | Core 1        | 23       | 3           | Studio Apartment | 37.1           |
| D        | Core 1        | 24       | 3           | 2 Bed Apartment  | 80.3           |
| D        | Core 1        | 25       | 3           | 2 Bed Apartment  | 80.3           |
| D        | Core 1        | 26       | 4           | 1 Bed Apartment  | 45.4           |
| D        | Core 1        | 27       | 4           | 1 Bed Apartment  | 47.1           |
| D        | Core 1        | 28       | 4           | Studio Apartment | 37.1           |
| D        | Core 1        | 29       | 4           | 2 Bed Apartment  | 80.3           |
| D        | Core 1        | 30       | 4           | 2 Bed Apartment  | 80.3           |

# PART V PROVISION

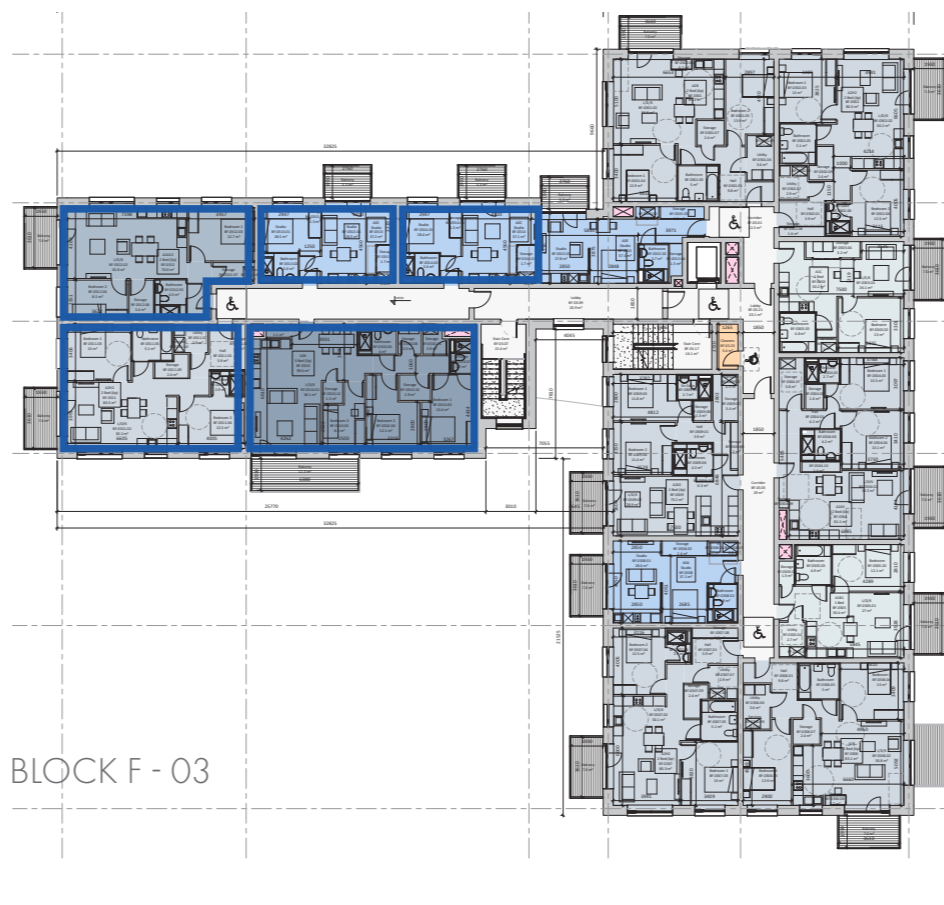
BLOCK F



BLOCK F - 00



BLOCK F - 02



BLOCK F - 04

In Response to DCC Housing Department requirements, we propose the provision of the remaining 26 units to be located within Block F as shown.

The proposed mix consists of 9 No. studios, 1 No. 1 bed, 12 No. 2 beds and 4 No. 3 beds.

PART V UNITS OUTLINED IN BLUE

TOTAL NO. OF UNITS

56 UNITS PROVIDED : 10%

# PART V PROVISION

## SCHEDULE OF ACCOMMODATION - BLOCK F

| Building | Staircore No. | Unit No. | Floor Level | Unit Description | Unit area (m2) |
|----------|---------------|----------|-------------|------------------|----------------|
| F        | Core 2        | 1        | 0           | 2 Bed Apartment  | 81.5           |
| F        | Core 1        | 2        | 0           | 1 Bed Apartment  | 50.4           |
| F        | Core 1        | 3        | 0           | 2 Bed Apartment  | 83.1           |
| F        | Core 1        | 4        | 0           | 2 Bed Apartment  | 80.3           |
| F        | Core 1        | 5        | 0           | Studio Apartment | 37.1           |
| F        | Core 1        | 6        | 0           | 2 Bed Apartment  | 73.2           |
| F        | Core 2        | 7        | 1           | 3 Bed Apartment  | 99             |
| F        | Core 2        | 8        | 1           | 2 Bed Apartment  | 80.3           |
| F        | Core 2        | 9        | 1           | 2 Bed Apartment  | 70             |
| F        | Core 2        | 10       | 1           | Studio Apartment | 37.2           |
| F        | Core 2        | 11       | 1           | Studio Apartment | 37.1           |
| F        | Core 2        | 12       | 2           | 3 Bed Apartment  | 99.1           |
| F        | Core 2        | 13       | 2           | 2 Bed Apartment  | 80.3           |
| F        | Core 2        | 14       | 2           | 2 Bed Apartment  | 70             |
| F        | Core 2        | 15       | 2           | Studio Apartment | 37.2           |
| F        | Core 2        | 16       | 2           | Studio Apartment | 37.1           |
| F        | Core 2        | 17       | 3           | 3 Bed Apartment  | 99             |
| F        | Core 2        | 18       | 3           | 2 Bed Apartment  | 80.3           |
| F        | Core 2        | 19       | 3           | 2 Bed Apartment  | 70             |
| F        | Core 2        | 20       | 3           | Studio Apartment | 37.2           |
| F        | Core 2        | 21       | 3           | Studio Apartment | 37.1           |
| F        | Core 2        | 22       | 4           | 3 Bed Apartment  | 99             |
| F        | Core 2        | 23       | 4           | 2 Bed Apartment  | 80.3           |
| F        | Core 2        | 24       | 4           | 2 Bed Apartment  | 70             |
| F        | Core 2        | 25       | 4           | Studio Apartment | 37.2           |
| F        | Core 2        | 26       | 4           | Studio Apartment | 37             |